



DATA CENTER / SALT LAKE CITY / SLC1

DOWNTOWN SALT LAKE CITY DATA CENTER

179 E Social Hall Avenue — Salt Lake City, UT

DataBank’s Downtown Salt Lake City data center is a multi-tenant colocation facility located in the heart of the downtown business district. SLC1 provides 11,000 square feet of raised floor space, 1.5MW of total power, redundant cooling, and backup generators with 24 hours of on-site fuel storage. The site is also the primary carrier-hotel for the Salt Lake City area, populated with a number of prominent Tier-1 and Tier-2 network providers which enter the building through multiple diverse points. We leverage this location to provide our regional blended bandwidth solutions as well as connectivity between DataBank facilities using dedicated, high-speed links.

SLC1

11,000

Raised Floor Square Footage

Tier III Design

Facility Rating

Multi-Tenant

Facility Type

2FA Control

Facility Security

Power

- 1.5MW**
Site Power Total
- 1MW**
Critical Power Total
- 120V, 208V, 3P**
AC Power
- DC Power**
Available
- N+1**
Power Design

Cooling

- 10kW**
Max Cab Density Air
- N+1**
Cooling Design

Network

- 1**
Meet-Me-Rooms
- 11**
On-Site Network Providers
- 2**
Fiber Entries
- Carrier Neutral**
Yes
- Carrier Hotel**
Yes
- Cloud Direct Connect**
Available

Platforms

- Colocation**
Cabinets | Cages | Suites
- Cloud**
In-Region
- Connectivity**
MPLS | Metro DCI
- Managed Internet**
Firewall | DDoS Mitigation

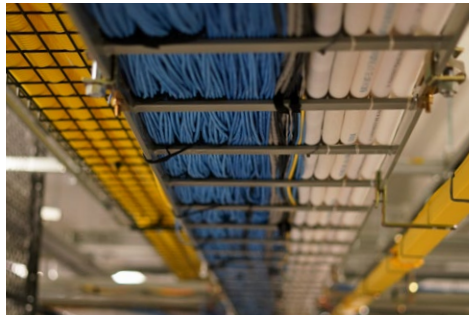
Compliance

- AICPA SOC
- HIPAA HITECH
- PCI
- ISO 27001 SSAE 18
- US Flag

Support

- 100% Up Time SLA
- 7x24x365 On-Site Support
- Remote Hands Available
- Smart Hands Available

FACILITY DETAILS



WHY DATABANK?



OUR APPROACH

We are your trusted partner committed to getting you the optimal solution to meet your business objectives



SECURITY

Our dedicated security and compliance teams lets us achieve the most stringent regulatory certifications for our facilities and solutions



ACCOUNTABILITY

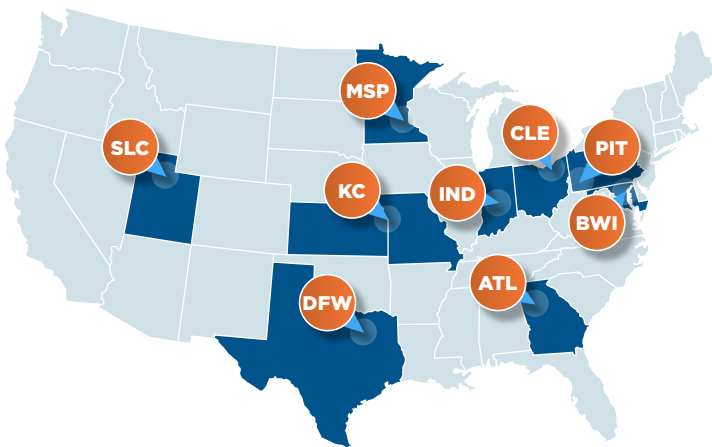
We are straightforward, thoughtful, and resolute in our pursuit of better customer experiences and business success



SERVICE

Datacenter staffed 24/7/365 with U.S. based responsive support engineers. Proactive service methods takes the burden off your team

LOCAL SERVICE. NATIONAL REACH.



Our **20 data centers** are strategically located in **9 edge markets** that offer high population densities as well as a concentration of technology business and research universities.

Each DataBank facility features:

- Robust connectivity
- Highly redundant infrastructure
- Priority power grid access
- Strong structural security
- Secondary carrier hotel option

TALK TO AN EXPERT

Discover the DataBank Difference

databank.com | 800.840.7533



DATABANK
Data Center Evolved™

DATA CENTERS | COLOCATION | CONNECTIVITY | CLOUD & HYBRID SOLUTIONS | MANAGED SERVICES