



DATA CENTER / DENVER / DEN2

# CENTENNIAL DATA CENTER

Centennial Data center - Denver, CO

DataBank's Denver Centennial colocation facility provides redundant power and cooling distribution engineered at 175 to 310 watts per sq. ft. and raised floor specifically optimized for high-density and ultra-high-density deployments. DataBank's 40,000 . Denver Centennial data center facility is a carrier-neutral interconnection hub with access to 8+ on-site carriers and many Internet, fiber, interconnect, and cross connect options. Our Tier III facility features security measures that include dual-factor biometric authentication, 7x24x365 staffing, and CCTV. Facility amenities include package service, on-site parking, break room, conference room, day-use office space, Wi-Fi, and equipment staging area for customer use. DEN2 is SSAE18 SOC1 & SOC2, SOC3, HIPAA, PCI-DSS, and FISMA Moderate compliant.





## DEN2

**40,000**  
Raised Square Feet

**Tier III Design**  
Tier Design

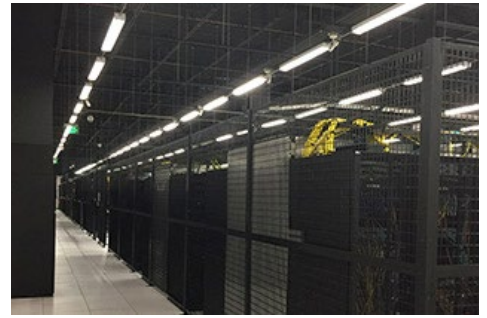
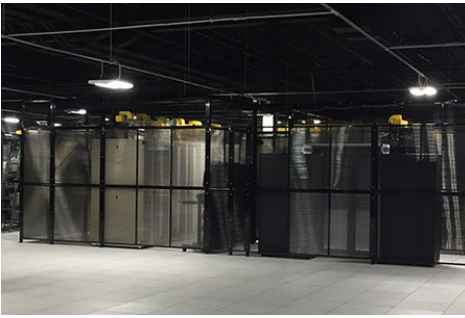
**Dedicated**  
Facility Type

**2FA**  
Facility Security

 <b>Power</b>	 <b>Cooling</b>	 <b>Network</b>	 <b>Platforms</b>
<b>N+1</b> Power Design	<b>N+1</b> Cooling Design	<b>2</b> Meet-Me-Rooms	<b>Cabinets; Cages</b> Colocation
<b>4MW</b> Critical IT Load	<b>10kW</b> Max Cab Density Air	<b>8</b> On-Site Network Providers	<b>In-Region</b> DataBank Cloud
<b>120V; 208V</b> AC Power		<b>2</b> Fiber Entries	
		<b>Available</b> Cloud Direct Connect	
		<b>Yes</b> Carrier Neutral	

 <b>Compliance</b>					
 <b>Support</b>	<b>100%</b> Up Time SLA	<b>7x24x365</b> On-Site Support	<b>Remote Hands</b> Support Available	<b>Smart Hands</b> Support Available	

## FACILITY DETAILS



## WHY DATABANK?



### OUR APPROACH

We are your trusted partner committed to getting you the optimal solution to meet your business objectives



### SECURITY

Our dedicated security and compliance teams lets us achieve the most stringent regulatory certifications for our facilities and solutions



### ACCOUNTABILITY

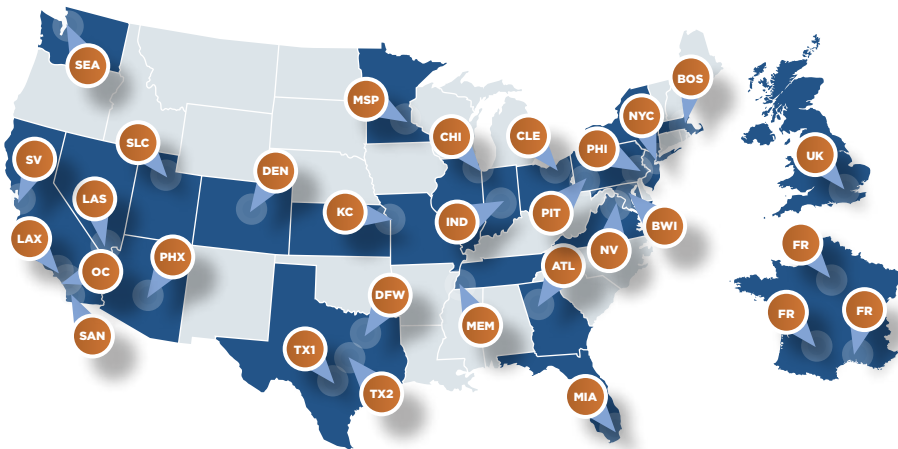
We are straightforward, thoughtful, and resolute in our pursuit of better customer experiences and business success



### SERVICE

Datacenter staffed 7/24/365 with U.S. based responsive support engineers. Proactive service methods takes the burden off your team

## LOCAL SERVICE. BOUNDLESS REACH.



Our **66 data centers** are strategically located in **59 edge markets** that offer high population densities as well as a concentration of technology, business, and research universities.

### Each DataBank facility features:

- Robust connectivity
- Highly redundant infrastructure
- Priority power grid access
- Strong structural security
- Secondary carrier hotel option

TALK TO AN EXPERT

Discover the DataBank Difference

[ask@databank.com](mailto:ask@databank.com) | 800.840.7533



**DATABANK**  
Data Center Evolved™

DATA CENTERS | COLOCATION | CONNECTIVITY | CLOUD & HYBRID SOLUTIONS | MANAGED SERVICES